

CONSULTING | REALTY | DEVELOPMENT

TILLER LAND

- COMPANY -

FARMLAND COLLECTION

PRESENTING

SENTENEY ROAD FARM

POINSETT COUNTY, ARKANSAS

TILLER LAND

SENTENEY ROAD FARM

- Poinsett County, Arkansas -

FARMLAND COLLECTION

Located just two miles north of Claypool Reservoir, this 448± acre farm sits in the heart of a well-known waterfowl corridor in Weiner, Arkansas. The area is recognized for holding and attracting ducks year after year, making this property a proven location for consistent hunting success and income.

The farm includes five established duck pits, providing duck hunting opportunities with excellent access and setup. The property has a profitable duck lease in place, with good, longtime tenants. Its close proximity to Claypool Reservoir enhances waterfowl movement and habitat, adding significant value for serious duck hunters and investors alike.

In addition to its recreational appeal, the property remains a productive rice and soybean farm, supported by four irrigation wells and one relift for dependable water management. This allows for efficient crop production while also supporting managed flooding for waterfowl during hunting season.

The Senteney Road Farm is an opportunity to own a true dual-purpose farm in a highly sought-after duck hunting area—combining strong agricultural ground, proven duck income, and an ideal location near one of the region's most consistent waterfowl reservoirs.

ASKING PRICE: \$3,000,000

TOTAL ACREAGE: +/- 448.02

COUNTY: Poinsett

CONSULTING | REALTY | DEVELOPMENT

TILLER LAND

2713 PAULA DRIVE | JONESBORO, AR 72404 | TILLERLAND.COM | 870-336-2654

TILLERLAND

SENTENEY ROAD FARM

- Poinsett County, Arkansas -

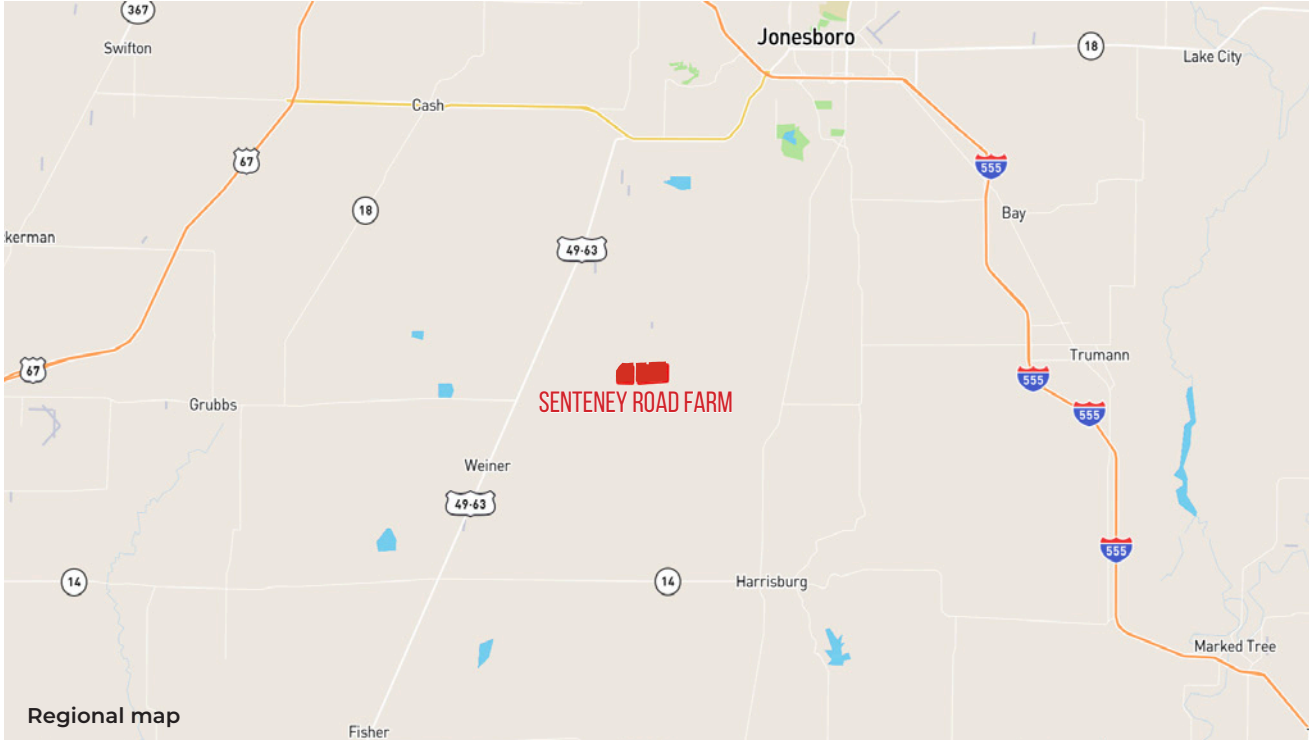


TILLER LAND

SENTENEY ROAD FARM

- Poinsett County, Arkansas -

REGIONAL & AERIAL MAPS



CONSULTING | REALTY | DEVELOPMENT

TILLER LAND

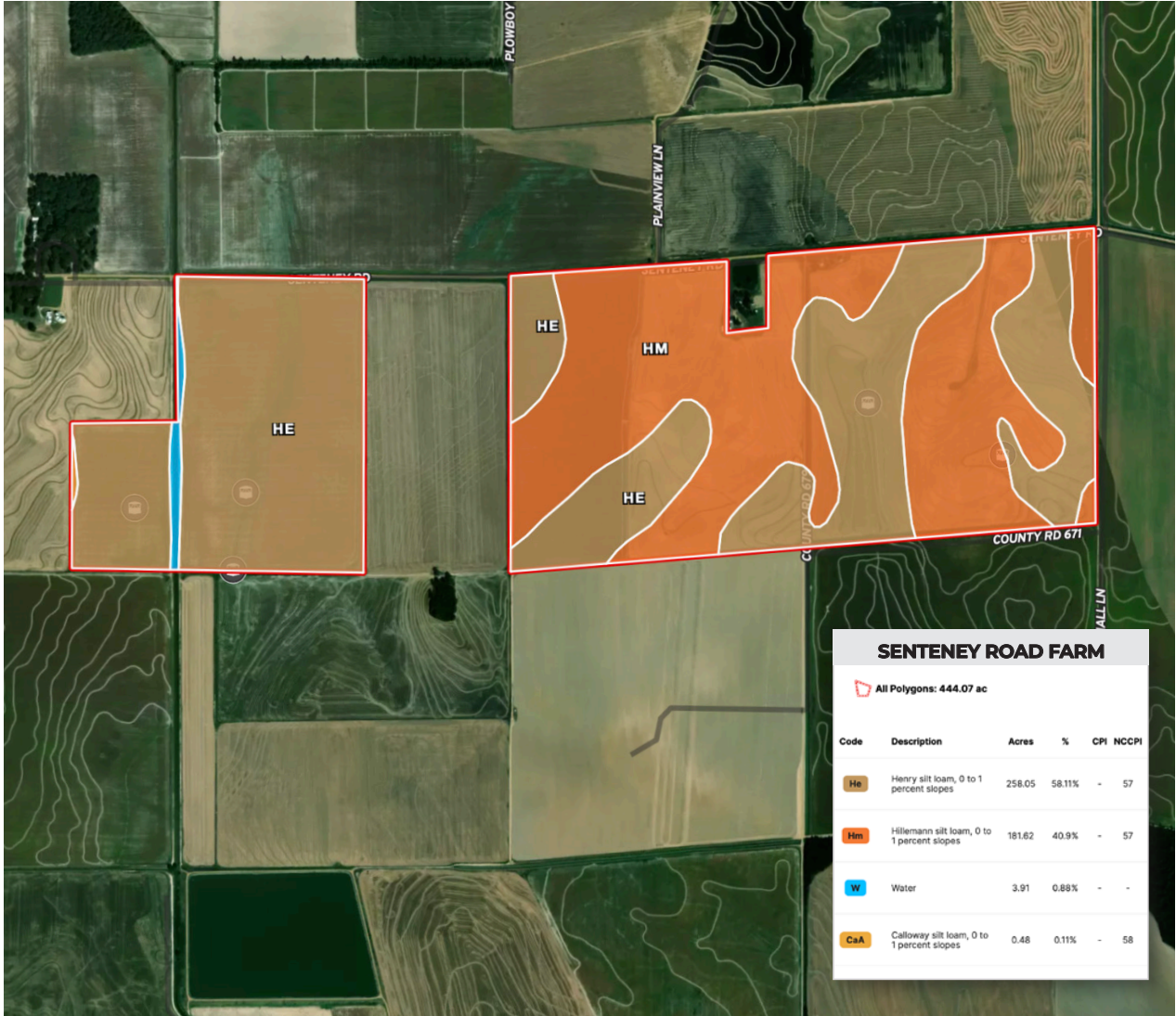
2713 PAULA DRIVE SUITE B | JONESBORO, AR 72404 | TILLERLAND.COM | 870-336-2654

TILLER LAND

SENTENTEY ROAD FARM

- Poinsett County, Arkansas -

SOIL MAP



CONSULTING | REALTY | DEVELOPMENT

TILLER LAND

CONSULTING | REALTY | DEVELOPMENT

TILLER LAND

- COMPANY -

Thanks for your interest in the
SENTENEY ROAD FARM

For questions or a property tour,
please contact:

BRIAN MACK
LAND AGENT

870.919.5945 | BRIAN@TILLERLAND.COM

KELLY PHIPPS
PRINCIPAL BROKER
870.351.2097
KELLY@TILLERLAND.COM

BRIAN MACK
LAND AGENT
870.919.5945
BRIAN@TILLERLAND.COM

JACK CHILDERS
LAND AGENT
870.243.1959
JACK@TILLERLAND.COM

TANER WOLVERTON
LAND AGENT
870.761.4700
TANER@TILLERLAND.COM

TILLER LAND COMPANY

2713 PAULA DRIVE SUITE B | JONESBORO, AR 72404 | 870-336-2654