

CONSULTING | REALTY | DEVELOPMENT

TILLER LAND

- COMPANY -



PRESENTING

THE MONTGOMERY FARM

CRAIGHEAD COUNTY, ARKANSAS

FARMLAND COLLECTION

TILLER LAND

THE MONTGOMERY FARM

- Craighead County, Arkansas -

FARMLAND COLLECTION

A PREMIERE CACHE RIVER PROPERTY.

Prime location for duck hunting paired with proven, productive soils.

The Montgomery Farm is a +/-896 acre property offering a strong combination of dependable agricultural ground and enjoyable outdoor recreation.

The acreage is fully precision leveled, allowing for efficient farming practices, easy irrigation, and smooth field operations. With highly productive soils and excellent, reliable water, this farm is well-suited for consistent crop performance year after year.

In addition to its farming strengths, the property also features excellent duck hunting. Its layout, water management, and surrounding habitat make it a natural draw for waterfowl, providing both seasonal recreation and added value.

ASKING PRICE: \$ 8,960,000

FSA DATA:

CROP	ACREAGE	PLC YIELD
Wheat	14.4	36
Rice-Long Grain	452.60	6115
Rice-Med Grain	98.06	5937
Soybean	188.64	40
Total Base Acres:	753.70	

TOTAL ACREAGE: +/- 896

FARMABLE ACREAGE: +/- 826

COUNTY: Craighead

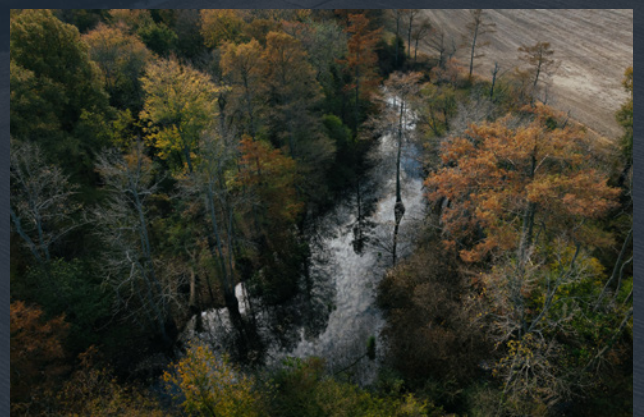
CONSULTING | REALTY | DEVELOPMENT

TILLER LAND

TILLER LAND

THE MONTGOMERY FARM

- Craighead County, Arkansas -

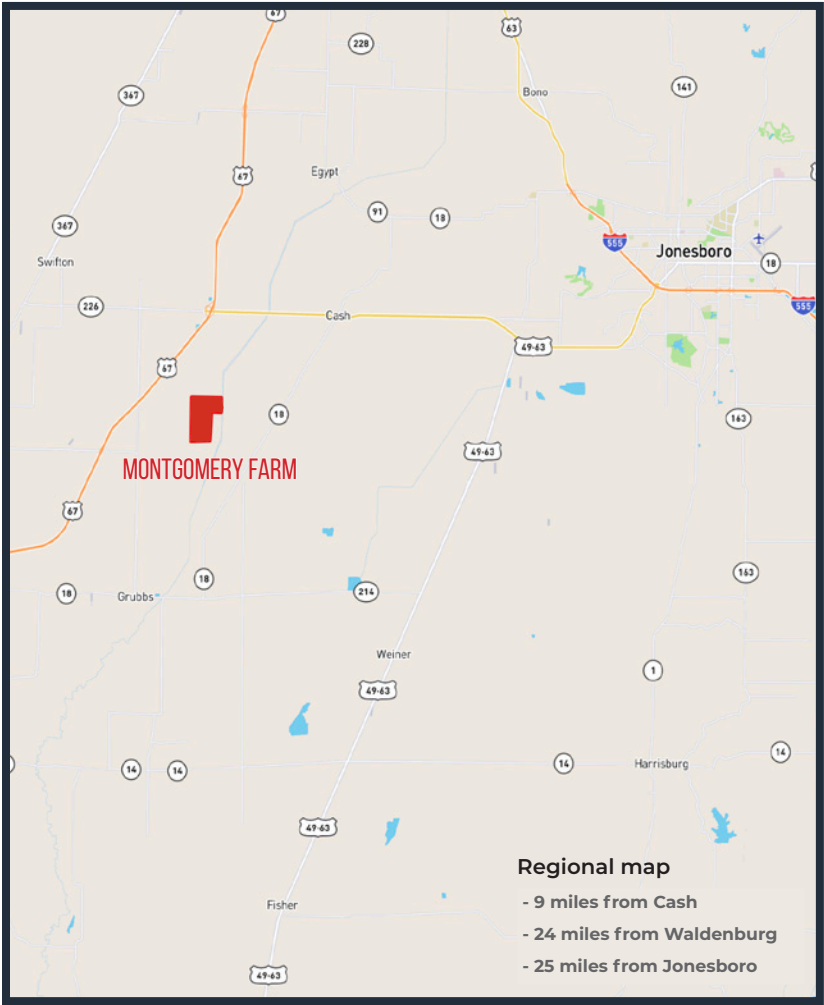
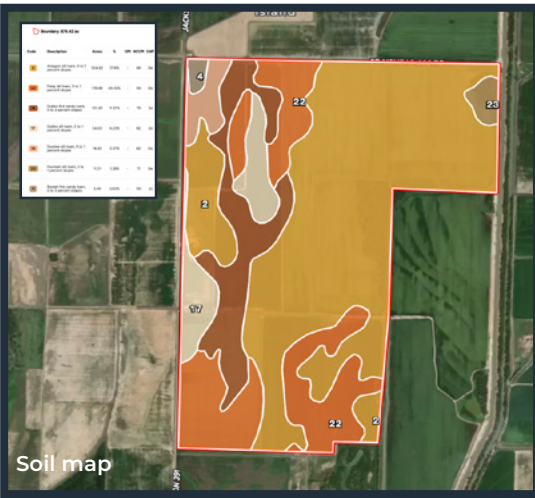
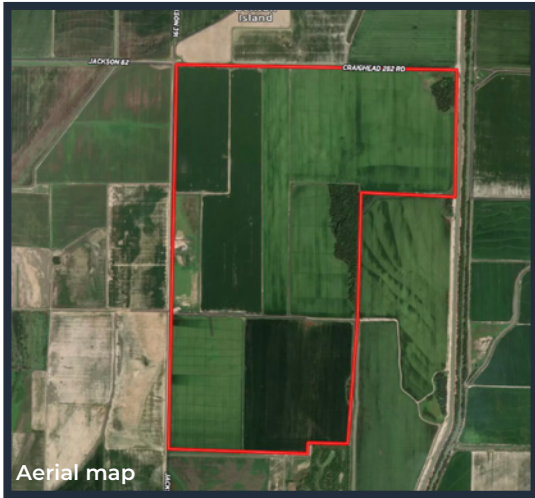


TILLER LAND

THE MONTGOMERY FARM

- Craighead County, Arkansas -

MAPS



CONSULTING | REALTY | DEVELOPMENT

TILLER LAND

CONSULTING | REALTY | DEVELOPMENT

TILLER LAND

- COMPANY -

Thanks for your interest in the
MONTGOMERY FARM

For questions or a property tour,
please contact:

BRIAN MACK
LAND AGENT

870.919.5945 | BRIAN@TILLERLAND.COM

KELLY PHIPPS
PRINCIPAL BROKER
870.351.2097
KELLY@TILLERLAND.COM

BRIAN MACK
LAND AGENT
870.919.5945
BRIAN@TILLERLAND.COM

JACK CHILDERS
LAND AGENT
870.243.1959
JACK@TILLERLAND.COM

TANER WOLVERTON
LAND AGENT
870.761.4700
TANER@TILLERLAND.COM

TILLER LAND COMPANY

2713 PAULA DRIVE SUITE B | JONESBORO, AR 72404 | 870-336-2654