

CONSULTING | REALTY | DEVELOPMENT

TILLER LAND

“COMPANY”

WILDLIFE COLLECTION

PRESENTING

WALDENBURG DUCK LODGE

WALDENBURG, ARKANSAS

TILLER LAND

WALDENBURG DUCK LODGE

- Poinsett County, Arkansas -

WILDLIFE COLLECTION

For sale in the heart of Poinsett County's duck country—this 3 bedroom, 2 bath home sits on a spacious 2.5-acre lot just 1.5 miles from Waldenburg and Pintails Restaurant. The location is also close to Bayou DeView WMA. Perfect for multiple duck hunters, the property features a dedicated wader room and a large barn ideal for storing hunting gear and side-by-sides. With its prime location surrounded by some of the best waterfowl hunting in Arkansas, this property is a rare find for this area, that combines comfort, convenience, the space for multiple lodgers.

Property Features:

- 3 Bedrooms
- 2 Baths
- Wader Room
- Large gathering room
- Large Barn for storage
- 1.5 miles from Waldenburg
- Located close to Bayou Deview WMA

TOTAL ACRES: +/- 2.5

ASKING PRICE: \$169,900

COUNTY: Poinsett

CONSULTING | REALTY | DEVELOPMENT

TILLER LAND

2713 PAULA DRIVE | JONESBORO, AR 72404 | TILLERLAND.COM | 870-336-2654

TILLERLAND

WALDENBURG DUCK LODGE

- Poinsett County, Arkansas -

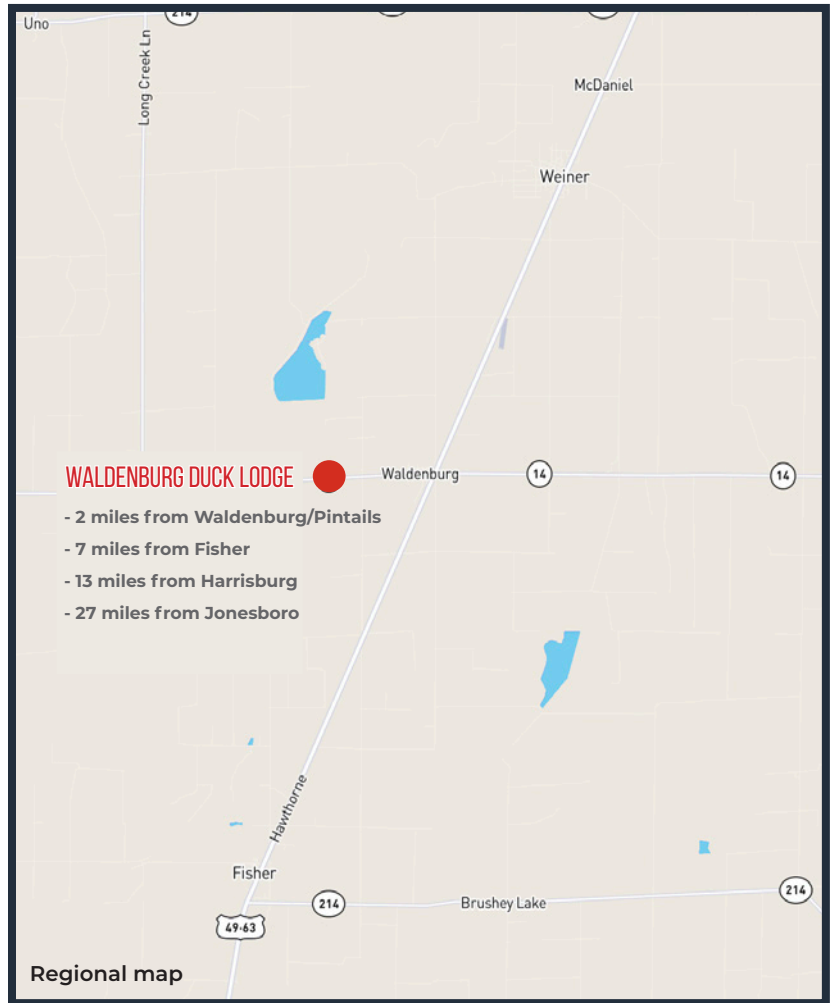
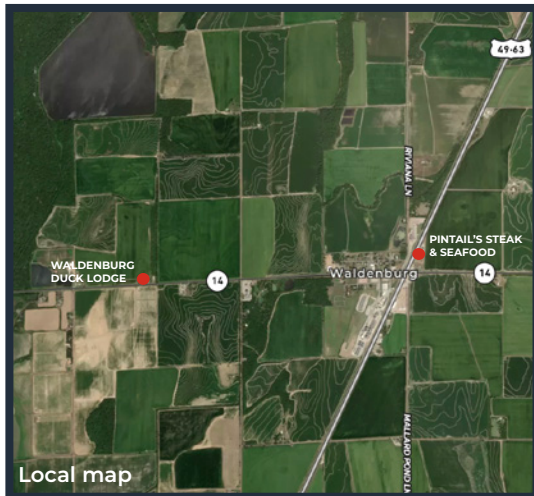


TILLER LAND

WALDENBURG DUCK LODGE

- Poinsett County, Arkansas -

REGIONAL & AERIAL MAPS



CONSULTING | REALTY | DEVELOPMENT

TILLER LAND

2713 PAULA DRIVE SUITE B | JONESBORO, AR 72404 | TILLERLAND.COM | 870-336-2654

CONSULTING | REALTY | DEVELOPMENT

TILLER LAND

‘COMPANY’

Thanks for your interest in the
WALDENBURG DUCK LODGE

For questions or a property tour,
please contact:

BRIAN MACK
LAND AGENT

870.919.5945 | BRIAN@TILLERLAND.COM

KELLY PHIPPS
PRINCIPAL BROKER
870.351.2097
KELLY@TILLERLAND.COM

BRIAN MACK
LAND AGENT
870.919.5945
BRIAN@TILLERLAND.COM

JACK CHILDERS
LAND AGENT
870.243.1959
JACK@TILLERLAND.COM

TANER WOLVERTON
LAND AGENT
870.761.4700
TANER@TILLERLAND.COM

TILLER LAND COMPANY

2713 PAULA DRIVE SUITE B | JONESBORO, AR 72404 | 870-336-2654