

CONSULTING | REALTY | DEVELOPMENT

**TILLER LAND**

- COMPANY -



PRESENTING

# THE VERSER FARM

POINSETT COUNTY, ARKANSAS

FARMLAND COLLECTION

# THE VERSER FARM

- Poinsett County, Arkansas -

## FARMLAND COLLECTION

The Verser Farm is a +/-700-acre row crop operation located in Fisher, Arkansas, offering exceptional agricultural and recreational value. This property boasts excellent rice-growing potential, supported by four irrigation wells, two relifts, a sizable on-site reservoir and underground pipe and risers that provide reliable water for reliable water access and efficient crop management. Two 20,000-bushel grain bins provide storage, adding convenience and flexibility for harvest and storage operations.

Beyond its farming strengths, the Verser Farm lies in a desirable location for duck hunting — a region well-known for consistent waterfowl activity — making it an attractive investment for those who enjoy outdoor recreation alongside farm ownership.

**ASKING PRICE:** \$ 4,389,000

### FSA DATA:

CROP	ACREAGE	PLC YIELD
Rice-Medium Grain	248.53	6765
Rice-Long Grain	203.42	7274
Soybean	316.55	41
Total Base Acres:	768.50	

**TOTAL ACREAGE:** +/- 700

**FARMABLE ACREAGE:** +/- 654.90

**COUNTY:** Poinsett

**OIL, GAS & MINERAL:** All rights owned will transfer

CONSULTING | REALTY | DEVELOPMENT

# TILLER LAND

2713 PAULA DRIVE | JONESBORO, AR 72404 | TILLERLAND.COM | 870-336-2654



# TILLER LAND

## THE VERSER FARM

- Poinsett County, Arkansas -



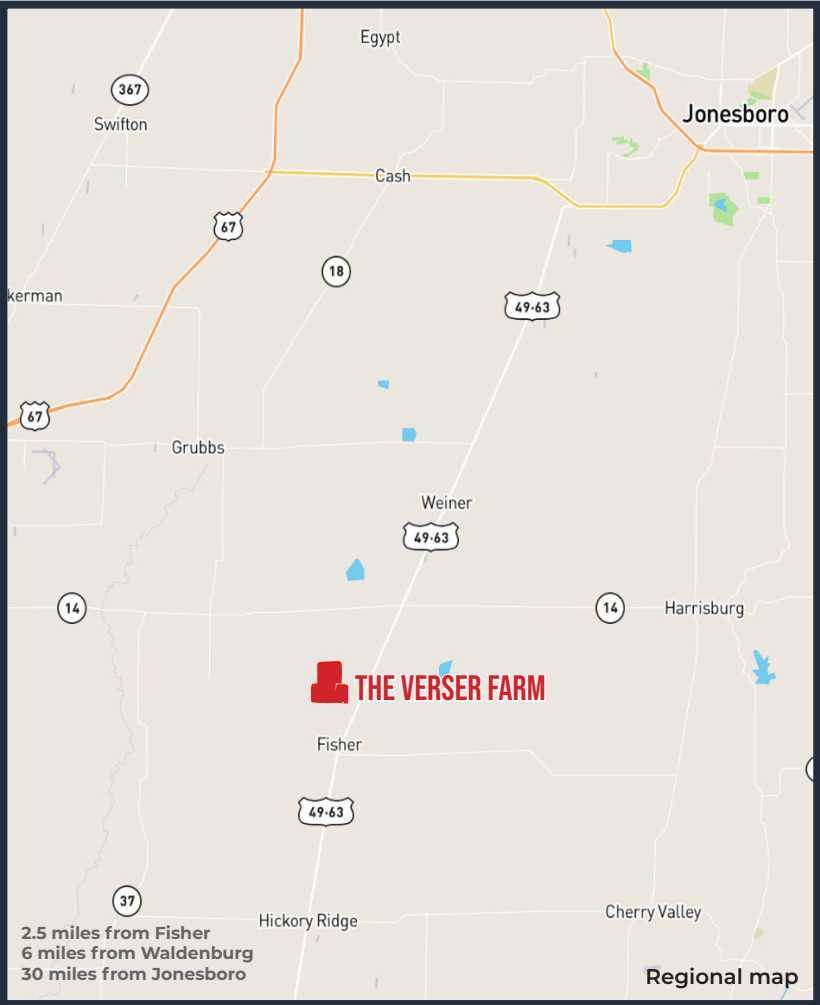
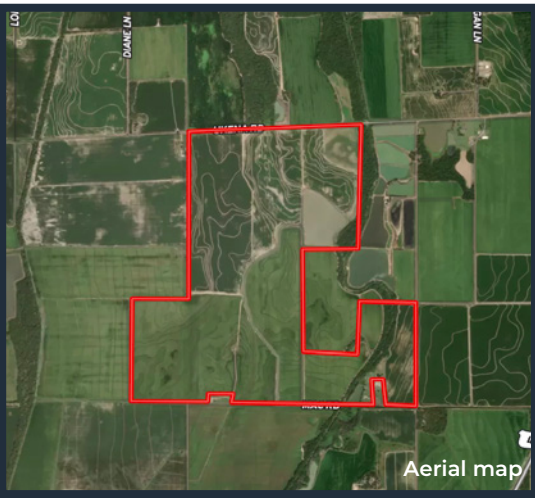


# TILLER LAND

## THE VERSER FARM

- Poinsett County, Arkansas -

### REGIONAL & AERIAL MAPS



CONSULTING | REALTY | DEVELOPMENT

# TILLER LAND

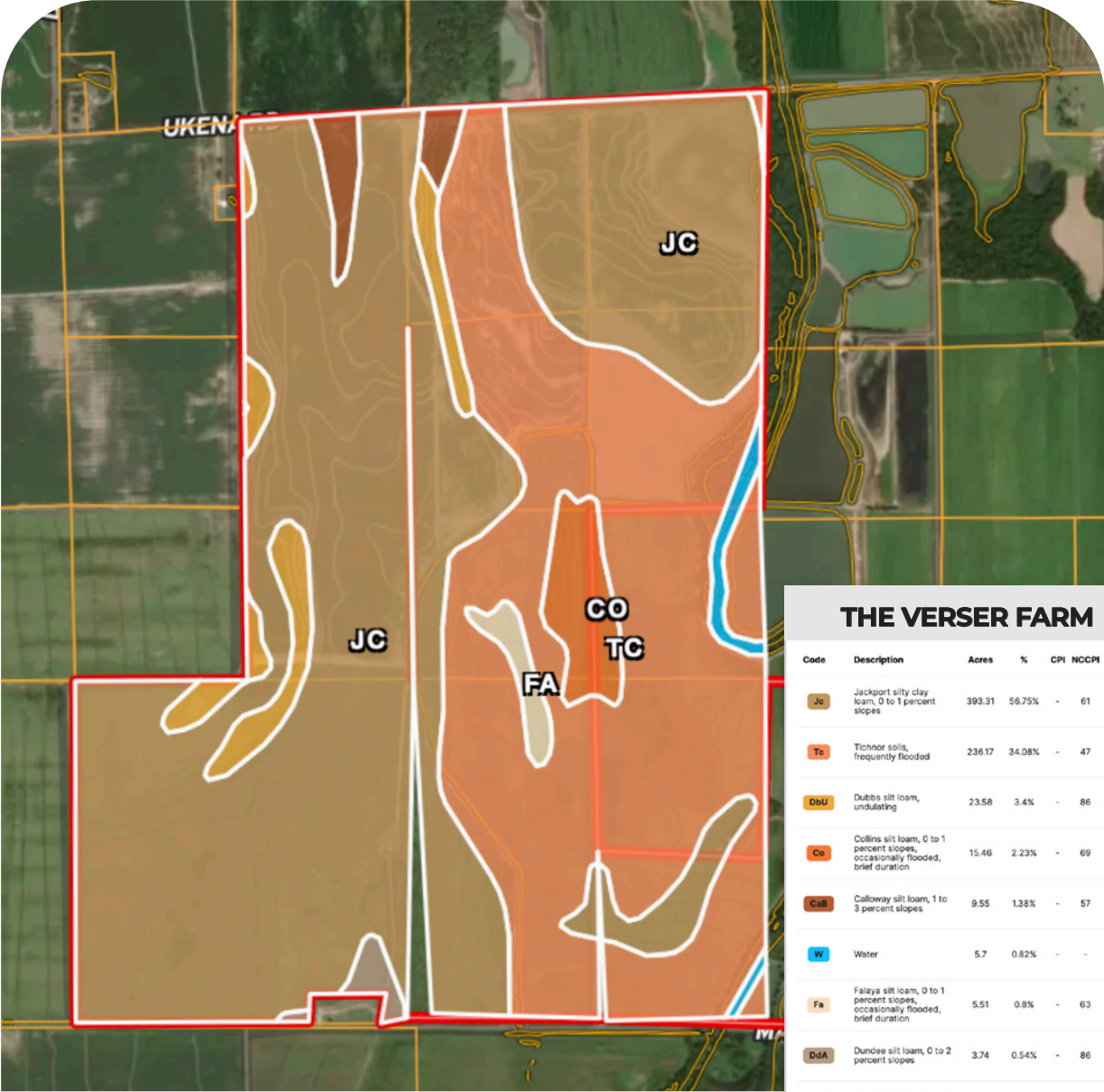
2713 PAULA DRIVE SUITE B | JONESBORO, AR 72404 | TILLERLAND.COM | 870-336-2654

# TILLER LAND

## THE VERSER FARM

- Poinsett County, Arkansas -

### SOIL MAP



CONSULTING | REALTY | DEVELOPMENT

# TILLER LAND

CONSULTING | REALTY | DEVELOPMENT

# TILLER LAND

- COMPANY -

Thanks for your interest in  
**THE VERSER FARM**

For questions or a property tour,  
please contact:

**KELLY PHIPPS**  
**PRINCIPAL BROKER**

870.351.2097 | [KELLY@TILLERLAND.COM](mailto:KELLY@TILLERLAND.COM)

**KELLY PHIPPS**  
PRINCIPAL BROKER  
870.351.2097  
[KELLY@TILLERLAND.COM](mailto:KELLY@TILLERLAND.COM)

**BRIAN MACK**  
LAND AGENT  
870.919.5945  
[BRIAN@TILLERLAND.COM](mailto:BRIAN@TILLERLAND.COM)

**JACK CHILDERS**  
LAND AGENT  
870.243.1959  
[JACK@TILLERLAND.COM](mailto:JACK@TILLERLAND.COM)

**TANER WOLVERTON**  
LAND AGENT  
870.761.4700  
[TANER@TILLERLAND.COM](mailto:TANER@TILLERLAND.COM)

**TILLER LAND COMPANY**

2713 PAULA DRIVE SUITE B | JONESBORO, AR 72404 | 870-336-2654