

An aerial photograph of a vast agricultural landscape. A wide, muddy river flows along the left side of the frame. The land is divided into large, rectangular fields, some of which are green and others brown. In the center, there's a large, irregularly shaped field with some water. The sky is blue with scattered white clouds.

CONSULTING | REALTY | DEVELOPMENT

TILLER LAND

- COMPANY -

FARMLAND COLLECTION

PRESENTING

THE BOYD FARM

CRAIGHEAD COUNTY, ARKANSAS

TILLER LAND

THE BOYD FARM

- Craighead County, Arkansas -

FARMLAND COLLECTION

The Boyd Farm is a 160 acre property located three miles south of Cash and twenty miles north of Weiner. This highly productive farm is also in a prime location for excellent duck hunting with it's close proximity to the Cache River and Crain farm. The property includes one sunken pit blind, and has good irrigation with two turbine wells.

Key Features:

- Highly productive farmland
- Good irrigation with two turbine wells
- Great duck hunting location, pit blind

TOTAL ACRES: +/- 160

Soybeans: 10.40

Rice-Med Grain: 12

Rice-Long Grain: 126

FARMABLE ACRES: +/-152.44 per FSA data

ASKING PRICE: \$1,200,000

COUNTY: Craighead

OIL, GAS & MINERAL: All rights owned will transfer

CONSULTING | REALTY | DEVELOPMENT

TILLER LAND

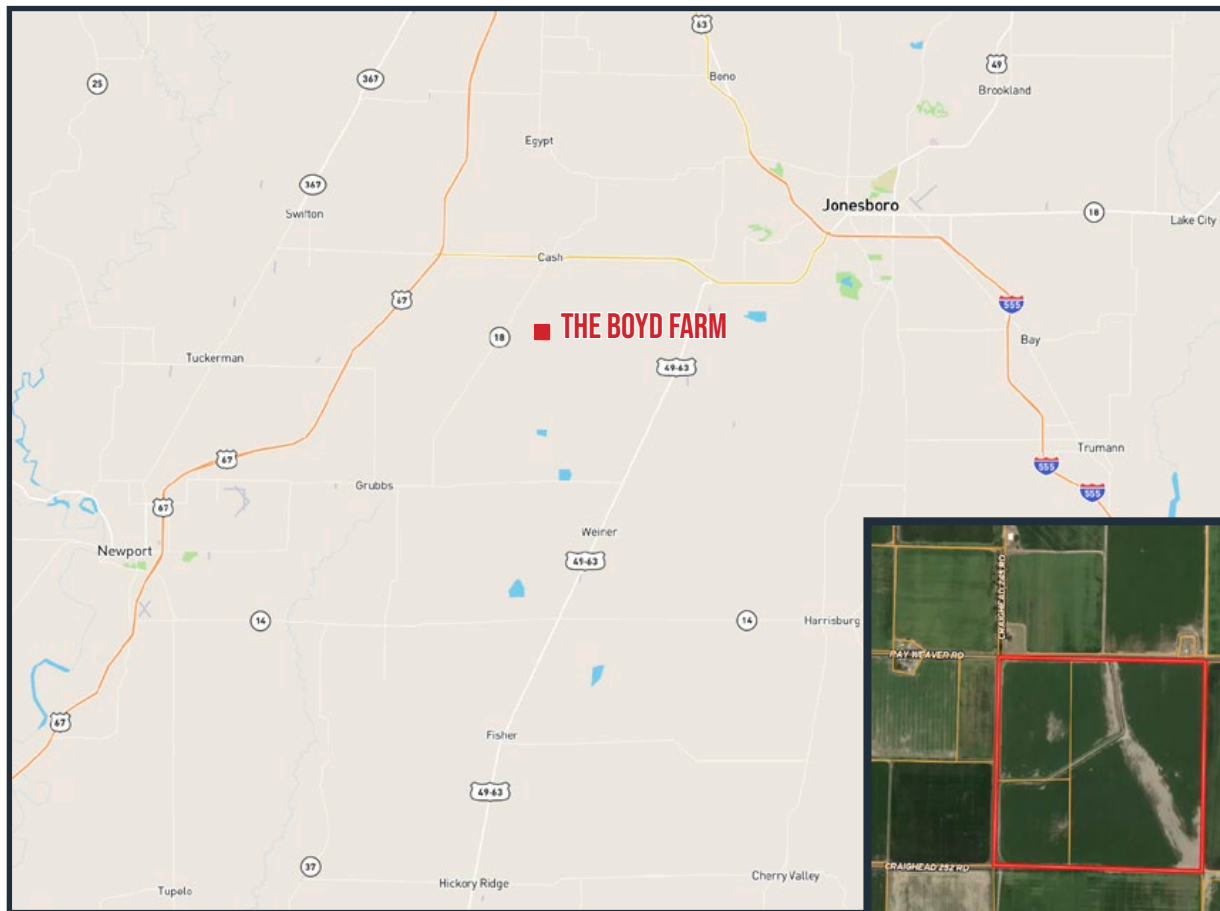
2713 PAULA DRIVE | JONESBORO, AR 72404 | TILLERLAND.COM | 870-336-2654

TILLER LAND

THE BOYD FARM

- Craighead County, Arkansas -

REGIONAL & AERIAL MAPS



3 miles from Cash
20 miles from Weiner



CONSULTING | REALTY | DEVELOPMENT

TILLER LAND

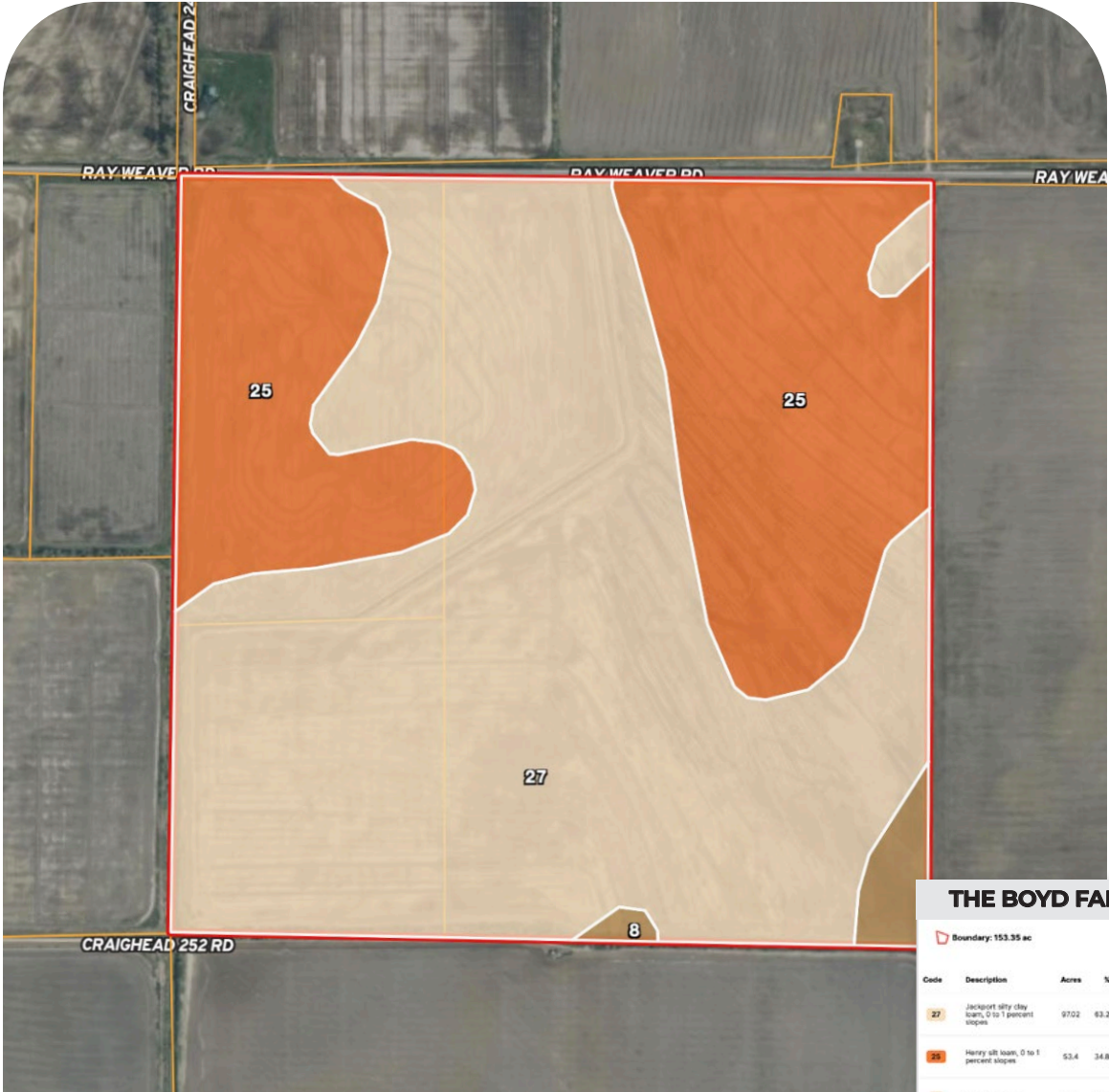
2713 PAULA DRIVE SUITE B | JONESBORO, AR 72404 | TILLERLAND.COM | 870-336-2654

TILLER LAND

THE BOYD FARM

- Craighead County, Arkansas -

SOIL MAP



THE BOYD FARM					
Boundary: 153.35 ac					
Code	Description	Acres	%	CPI	NCCPI
27	Jacksonport silty clay loam, 0 to 1 percent slopes	97.02	63.27%	-	61
25	Henry silt loam, 0 to 1 percent slopes	53.4	34.82%	-	57
8	Calhoun silt loam	2.93	1.91%	-	73
Totals 153.35 ac				Q CPI Average 59.84	NCCPI Average

CONSULTING | REALTY | DEVELOPMENT

TILLER LAND

TILLER LAND

THE BOYD FARM

- Craighead County, Arkansas -



CONSULTING | REALTY | DEVELOPMENT

TILLER LAND

- COMPANY -

Thanks for your interest in the

THE BOYD FARM

For questions or a property tour,
please contact:

BRIAN MACK
SALES AGENT

870.919.5945 | Brian@Tillerland.com

KELLY PHIPPS
PRINCIPAL BROKER
870.351.2097
KELLY@TILLERLAND.COM

BRIAN MACK
LAND AGENT
870.919.5945
BRIAN@TILLERLAND.COM

JACK CHILDERS
LAND AGENT
870.243.1959
JACK@TILLERLAND.COM

TANER WOLVERTON
LAND AGENT
870.761.4700
TANER@TILLERLAND.COM

TILLER LAND COMPANY

2713 PAULA DRIVE SUITE B | JONESBORO, AR 72404 | 870-336-2654