

CONSULTING | REALTY | DEVELOPMENT

TILLER LAND

- COMPANY -



FARMLAND COLLECTION

PRESENTING

THE GREENE COUNTY 177

GREENE COUNTY, ARKANSAS

TILLER LAND

GREENE COUNTY 177

- Greene County, Arkansas -

FARMLAND COLLECTION

The Greene County 177 is a highly productive irrigated row crop farm with rotation options of rice, corn, cotton and soybeans. With it's proximity to the St Francis River this farm has ample water approximately 30-40 ft. below surface with two diesel powered turbine wells.

TOTAL ACREAGE: +/- 177

FARMABLE ACRES: +/- 163

ASKING PRICE: \$1,385,500

REAL ESTATE TAXES: TBD

COUNTY: Greene

OIL, GAS & MINERAL: All rights owned will transfer

CONSULTING | REALTY | DEVELOPMENT

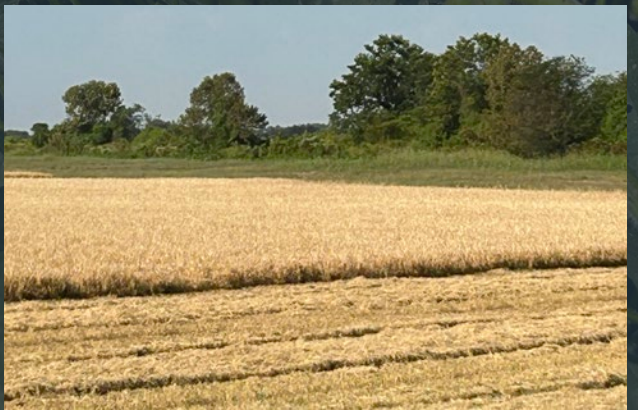
TILLER LAND

2713 PAULA DRIVE | JONESBORO, AR 72404 | TILLERLAND.COM | 870-336-2654

TILLERLAND

GREENE COUNTY 177

- Greene County, Arkansas -

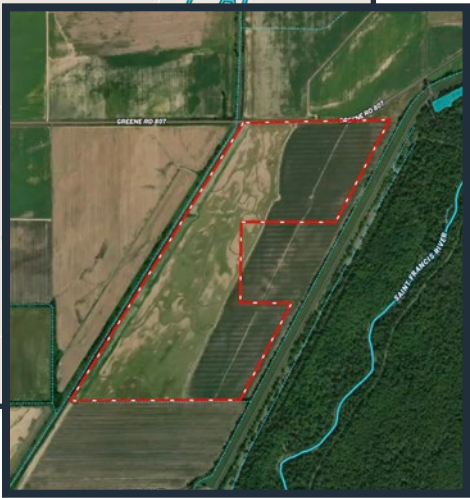
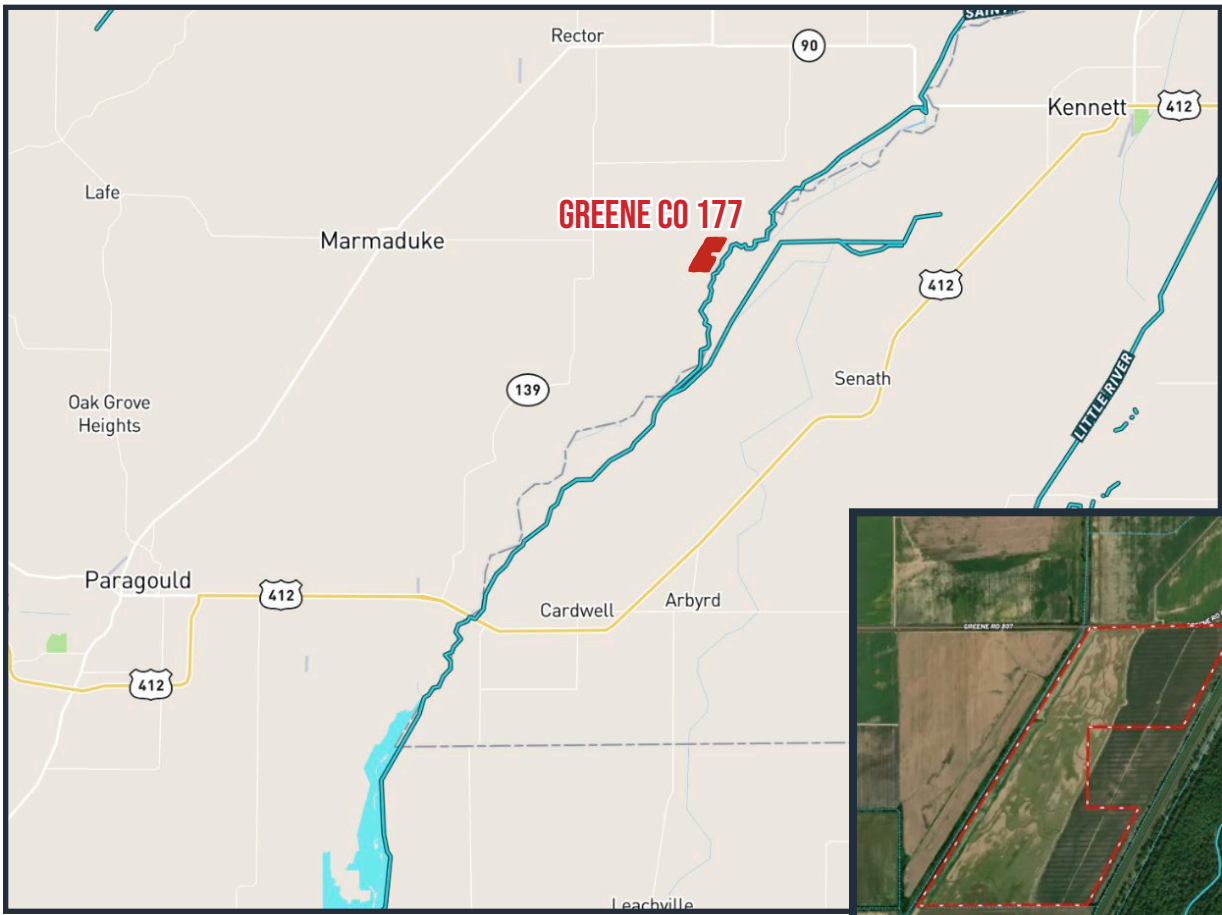


TILLER LAND

GREENE COUNTY 177

- Greene County, Arkansas -

REGIONAL & AERIAL MAPS



CONSULTING | REALTY | DEVELOPMENT

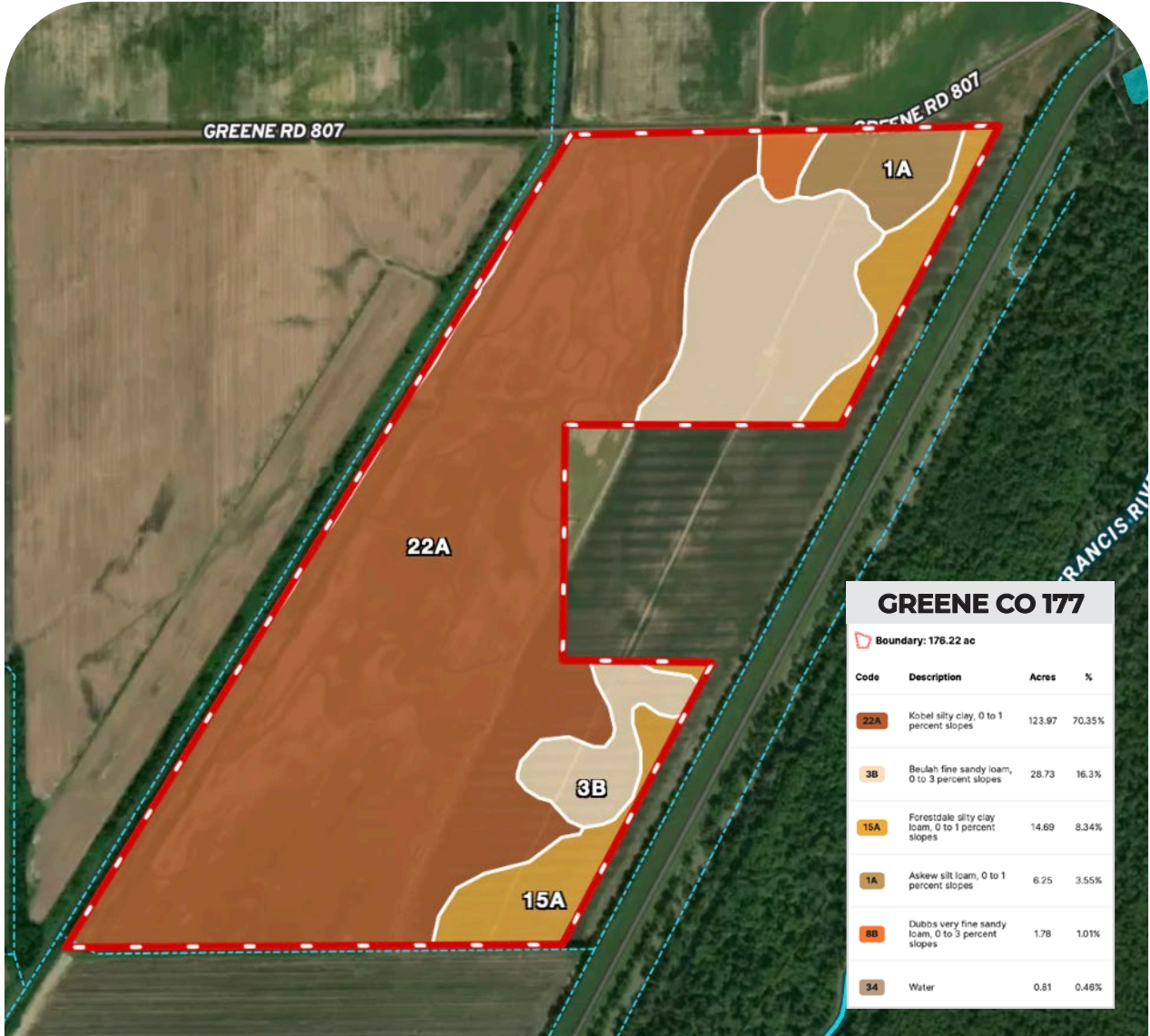
TILLER LAND

TILLER LAND

GREENE COUNTY 177

- Greene County, Arkansas -

SOIL MAP



CONSULTING | REALTY | DEVELOPMENT

TILLER LAND

CONSULTING | REALTY | DEVELOPMENT

TILLER LAND

- COMPANY -

Thanks for your interest in the
GREENE COUNTY 177

For questions or a property tour,
please contact:

KELLY PHIPPS
PRINCIPAL BROKER

870.351.2097 | Kelly@Tillerland.com

KELLY PHIPPS
PRINCIPAL BROKER
870.351.2097
KELLY@TILLERLAND.COM

BRIAN MACK
LAND AGENT
870.919.5945
BRIAN@TILLERLAND.COM

JACK CHILDERS
LAND AGENT
870.243.1959
JACK@TILLERLAND.COM

TANER WOLVERTON
LAND AGENT
870.761.4700
TANER@TILLERLAND.COM

TILLER LAND COMPANY

2713 PAULA DRIVE SUITE B | JONESBORO, AR 72404 | 870-336-2654