

CONSULTING | REALTY | DEVELOPMENT

# TILLER LAND

- COMPANY -



PRESENTING

## THE COLT 96

ST. FRANCIS COUNTY, ARKANSAS

FARMLAND COLLECTION

# TILLER LAND

## THE COLT 96

- St. Francis, Arkansas -

### FARMLAND COLLECTION

The Colt 96 is a multi-use farmland/hunting property with a total of 96.1 acres. The farmable acres total just over 61 acres, and has produced rice, wheat and soybeans. The farm is located in Colt, about 10 miles from both Forrest City and Wynne, Arkansas. There is good irrigation with one turbine well on the property. The current farm lease is \$7500 per year cash rent.

#### **TOTAL BASE ACRES: 57.2**

<i>Wheat: 15.9</i>	<i>PLC Yield: 64</i>
<i>Soybeans: 1.3</i>	<i>PLC Yield: 35</i>
<i>Rice-Med Grain: 3.5</i>	<i>PLC Yield: 4167</i>
<i>Rice-Long Grain: 36.5</i>	<i>PLC Yield: 6234</i>

**FARMABLE ACRES:** +/- 61.2 per FSA data

**TOTAL ACREAGE:** +/- 96.1 per survey

**ASKING PRICE:** \$499,000

**REAL ESTATE TAXES:** \$540.71 per ArCountyData.com

**COUNTY:** St. Francis

**OIL, GAS & MINERAL:** All rights owned will transfer

CONSULTING | REALTY | DEVELOPMENT

# TILLER LAND

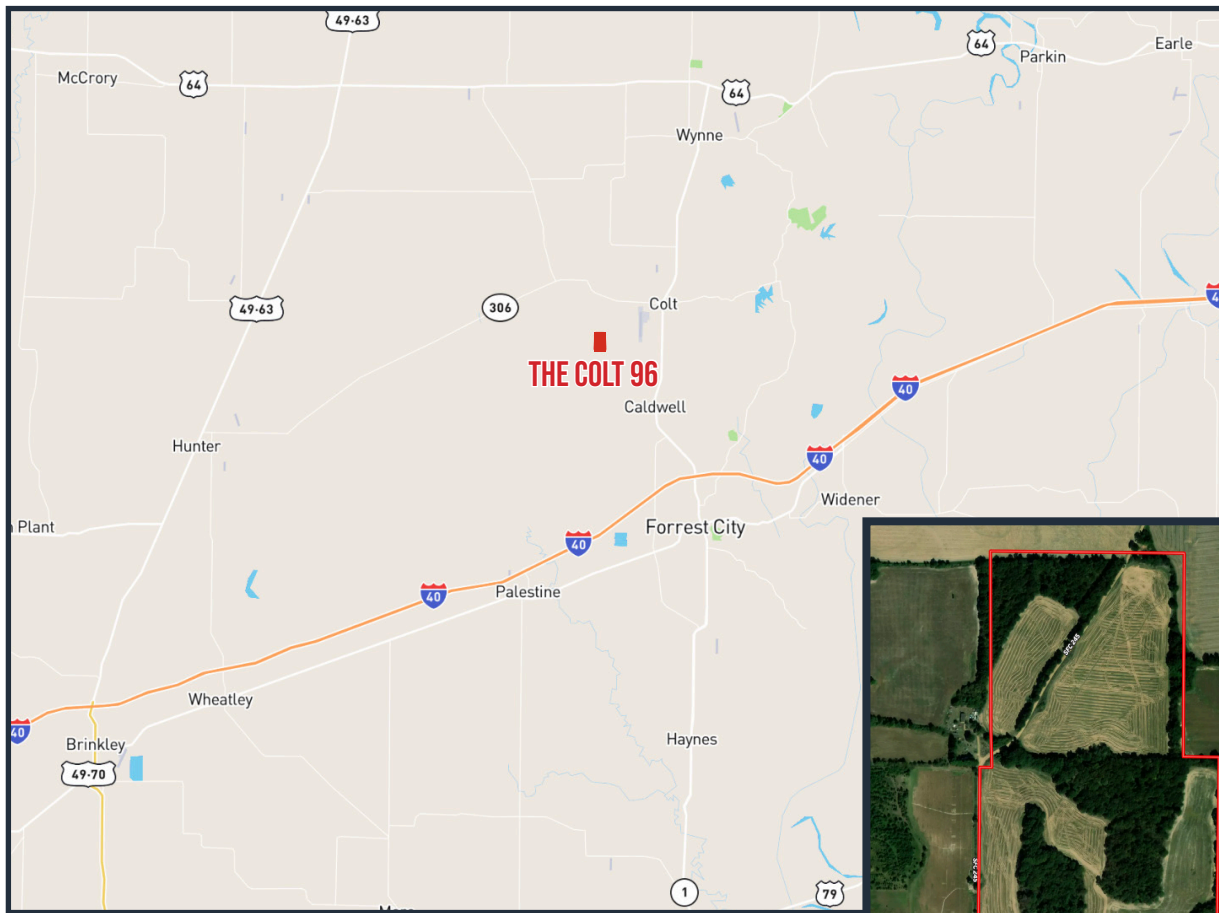
2713 PAULA DRIVE | JONESBORO, AR 72404 | TILLERLAND.COM | 870-336-2654

# TILLER LAND

## THE COLT 96

- St. Francis County, Arkansas -

### REGIONAL & AERIAL MAPS



11 miles from Wynne  
10 miles from Forrest City



CONSULTING | REALTY | DEVELOPMENT

# TILLER LAND

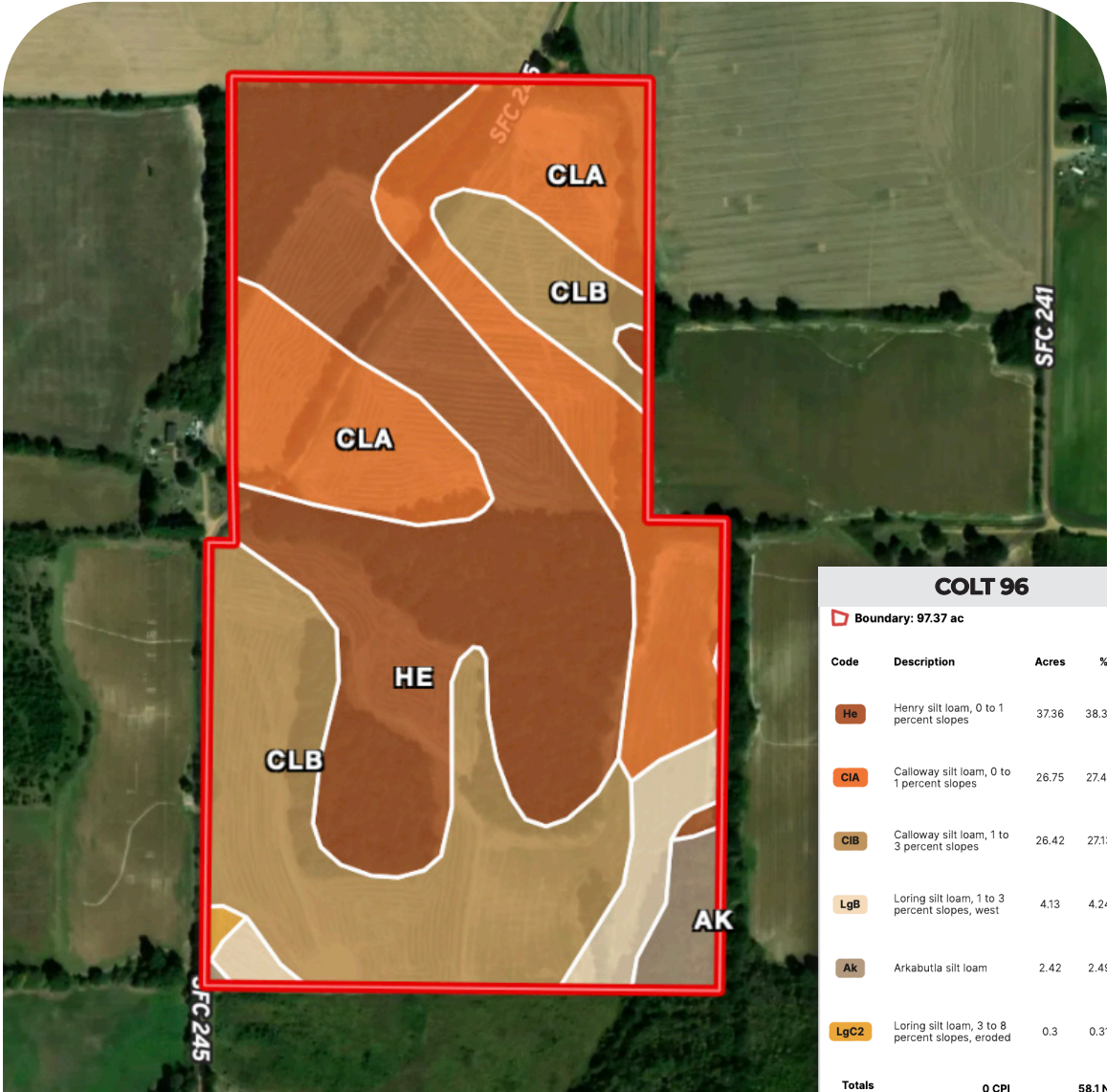
2713 PAULA DRIVE SUITE B | JONESBORO, AR 72404 | TILLERLAND.COM | 870-336-2654

# TILLER LAND

## THE COLT 96

- St. Francis County, Arkansas -

### SOIL MAP



CONSULTING | REALTY | DEVELOPMENT

# TILLER LAND

# TILLERLAND

## THE COLT 96

- St. Francis County, Arkansas -



CONSULTING | REALTY | DEVELOPMENT

# TILLER LAND

- COMPANY -

Thanks for your interest in the

## THE COLT 96

For questions or a property tour,  
please contact:

**KELLY PHIPPS**  
**PRINCIPAL BROKER**

870.351.2097 | [Kelly@Tillerland.com](mailto:Kelly@Tillerland.com)

**KELLY PHIPPS**  
PRINCIPAL BROKER  
870.351.2097  
[KELLY@TILLERLAND.COM](mailto:KELLY@TILLERLAND.COM)

**BRIAN MACK**  
LAND AGENT  
870.919.5945  
[BRIAN@TILLERLAND.COM](mailto:BRIAN@TILLERLAND.COM)

**JACK CHILDERS**  
LAND AGENT  
870.243.1959  
[JACK@TILLERLAND.COM](mailto:JACK@TILLERLAND.COM)

**TANER WOLVERTON**  
LAND AGENT  
870.761.4700  
[TANER@TILLERLAND.COM](mailto:TANER@TILLERLAND.COM)

**TILLER LAND COMPANY**

2713 PAULA DRIVE SUITE B | JONESBORO, AR 72404 | 870-336-2654