

CONSULTING | REALTY | DEVELOPMENT

# TILLER LAND

- COMPANY -



RESIDENTIAL COLLECTION

PRESENTING

## THE TUPELO HOME

TUPELO, ARKANSAS

# TILLER LAND

## THE TUPELO HOME

- Tupelo, Arkansas -

### RESIDENTIAL COLLECTION

**SQUARE FOOTAGE: 1,540**

Bedrooms: 3

Baths: 2

Heat/Air: Central

**PRICE PER SQ. FT: \$58**

**LOT SIZE: .28 Acres**

**ASKING PRICE: \$89,000**

**REAL ESTATE TAXES: \$ TBD**

**COUNTY: Jackson**

**FEATURES:** Located just 8 miles north of McCrory, in between the Cache and White River, it's a perfect opportunity for the avid water-fowl hunter. The layout of the home would be ideal for sleeping multiple hunters. The property includes a garden shed and barn for extra storage.

**ADDRESS:**

404 Front Street

Tupelo, Arkansas 72112

CONSULTING | REALTY | DEVELOPMENT

# TILLER LAND

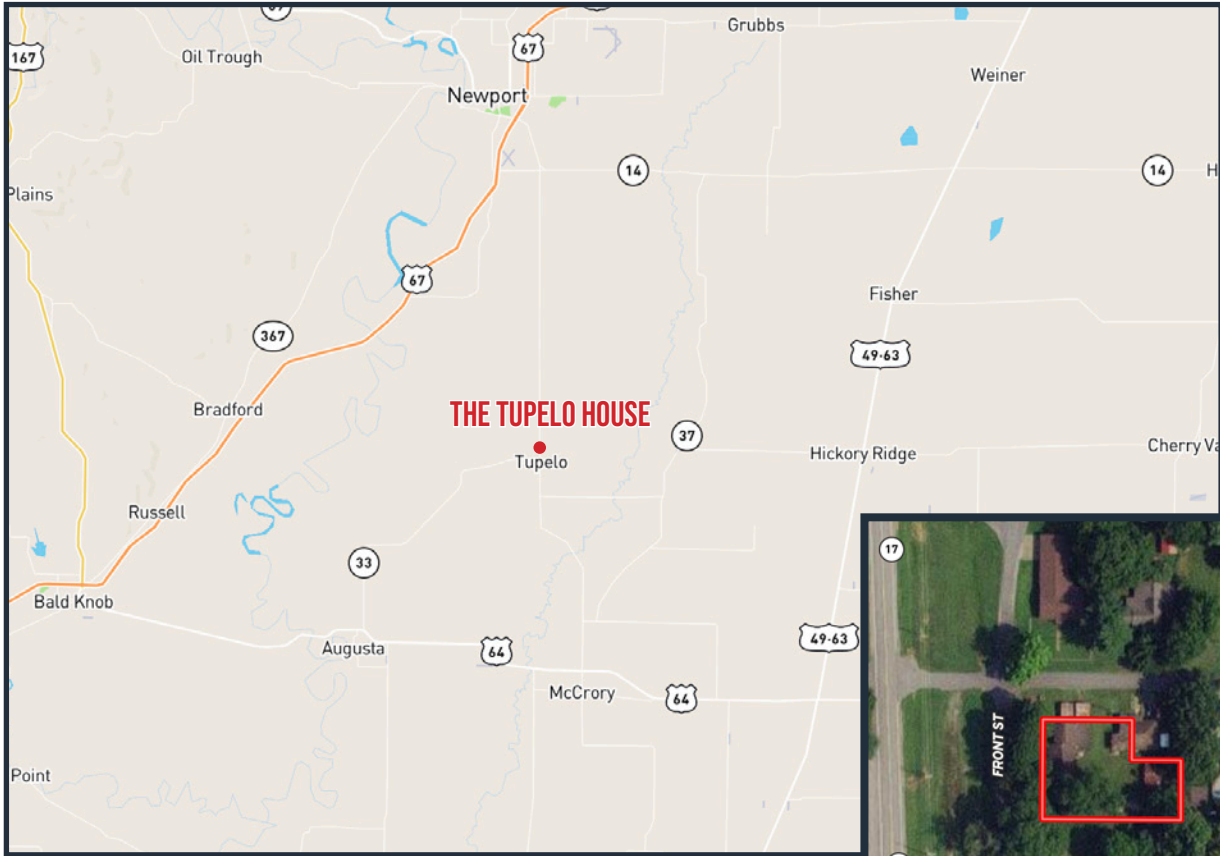
2713 PAULA DRIVE SUITE B | JONESBORO, AR 72404 | TILLERLAND.COM | 870-336-2456

# TILLER LAND

## THE TUPELO HOME

- Tupelo, Arkansas -

### REGIONAL MAP



\* 8 miles from McCrory, 15 miles from Newport

CONSULTING | REALTY | DEVELOPMENT

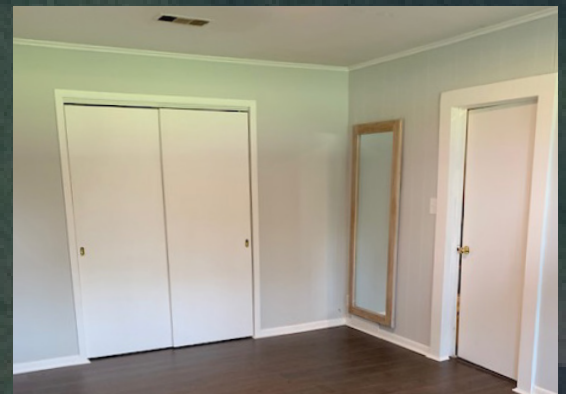
# TILLER LAND



# TILLER LAND

## THE TUPELO HOME

- Tupelo, Arkansas -



CONSULTING | REALTY | DEVELOPMENT

# TILLER LAND

- COMPANY -

Thanks for your interest in  
**THE TUPELO HOME**

For questions or a property tour,  
please contact:

**TANER WOLVERTON**

**LAND AGENT**

870.761.4700 | [TANER@TILLERLAND.COM](mailto:TANER@TILLERLAND.COM)

**KELLY PHIPPS**  
PRINCIPAL BROKER  
870.351.2097  
[KELLY@TILLERLAND.COM](mailto:KELLY@TILLERLAND.COM)

**BRIAN MACK**  
LAND AGENT  
870.919.5945  
[BRIAN@TILLERLAND.COM](mailto:BRIAN@TILLERLAND.COM)

**JACK CHILDERS**  
LAND AGENT  
870.243.1959  
[JACK@TILLERLAND.COM](mailto:JACK@TILLERLAND.COM)

**TANER WOLVERTON**  
LAND AGENT  
870.761.4700  
[TANER@TILLERLAND.COM](mailto:TANER@TILLERLAND.COM)

**TILLER LAND COMPANY**

2713 PAULA DRIVE SUITE B | JONESBORO, AR 72404 | 870-336-2654