

CONSULTING | REALTY | DEVELOPMENT

# TILLER LAND

- COMPANY -

WILDLIFE COLLECTION

PRESENTING

## THE JOHNSON 80

CLAY COUNTY, ARKANSAS

# TILLER LAND

## THE JOHNSON 80

- Clay County, Arkansas -

### WILDLIFE COLLECTION

The Johnson 80 is a unique property located Northwest of Rector. The farm is currently used for cattle production supporting cow calf operation including two ponds as a water source. A sizable barn with water is able to store the annual hay crop. Wildlife is abundant on the farm, producing large deer, numerous turkey and various other species. One of two ponds is known for excellent fishing.

**TOTAL ACREAGE:** +/- 80

**ASKING PRICE:** \$ 340,000

**REAL ESTATE TAXES:** \$ 630 *estimated per ARCountyData.com*

**COUNTY:** Clay

**OIL, GAS & MINERAL:** All rights owned will transfer

CONSULTING | REALTY | DEVELOPMENT

# TILLER LAND

2713 PAULA DRIVE SUITE B | JONESBORO, AR 72404 | TILLERLAND.COM | 870-336-2654

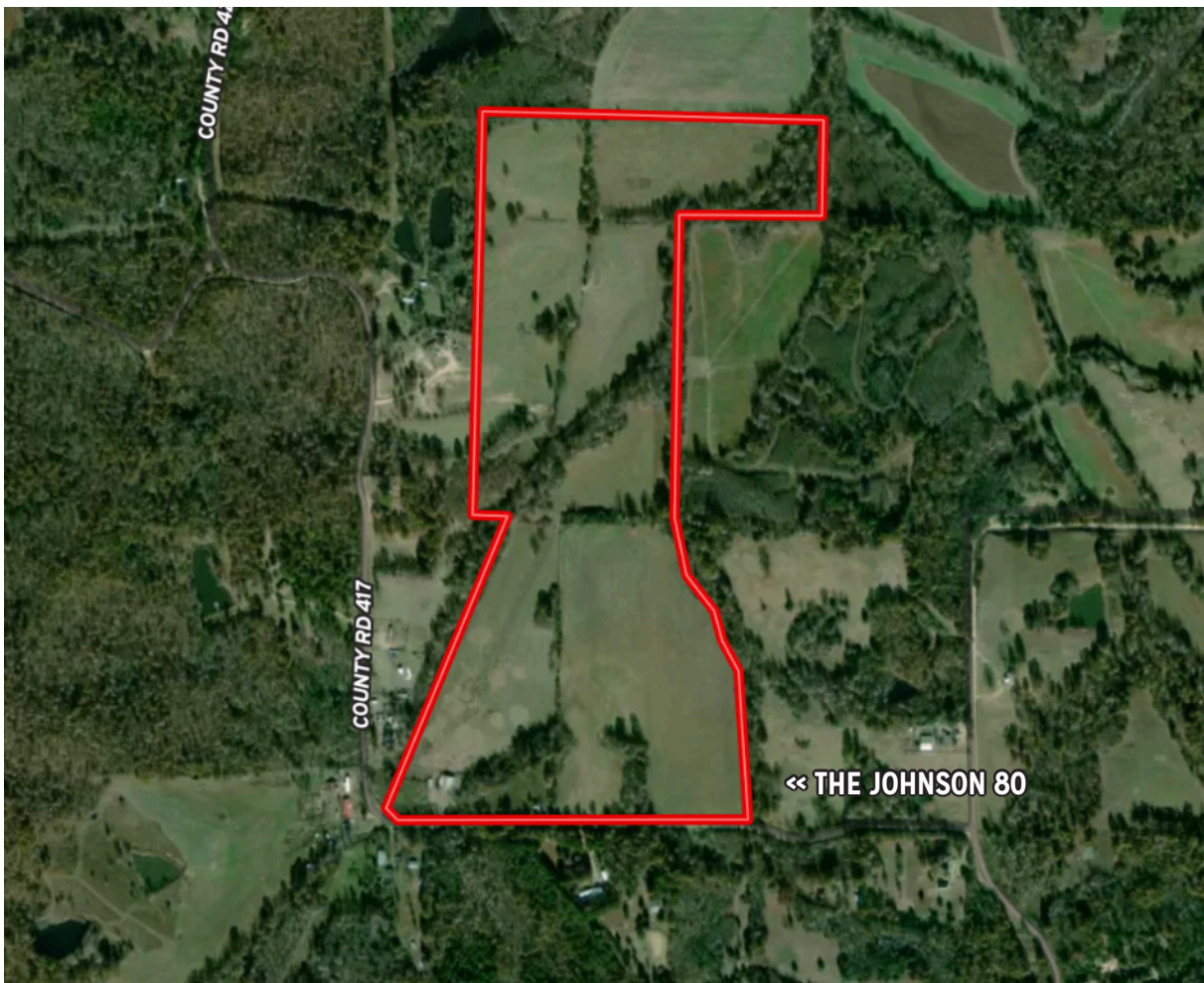


# TILLER LAND

## THE JOHNSON 80

- Clay County, Arkansas -

AERIAL MAP



CONSULTING | REALTY | DEVELOPMENT

# TILLER LAND

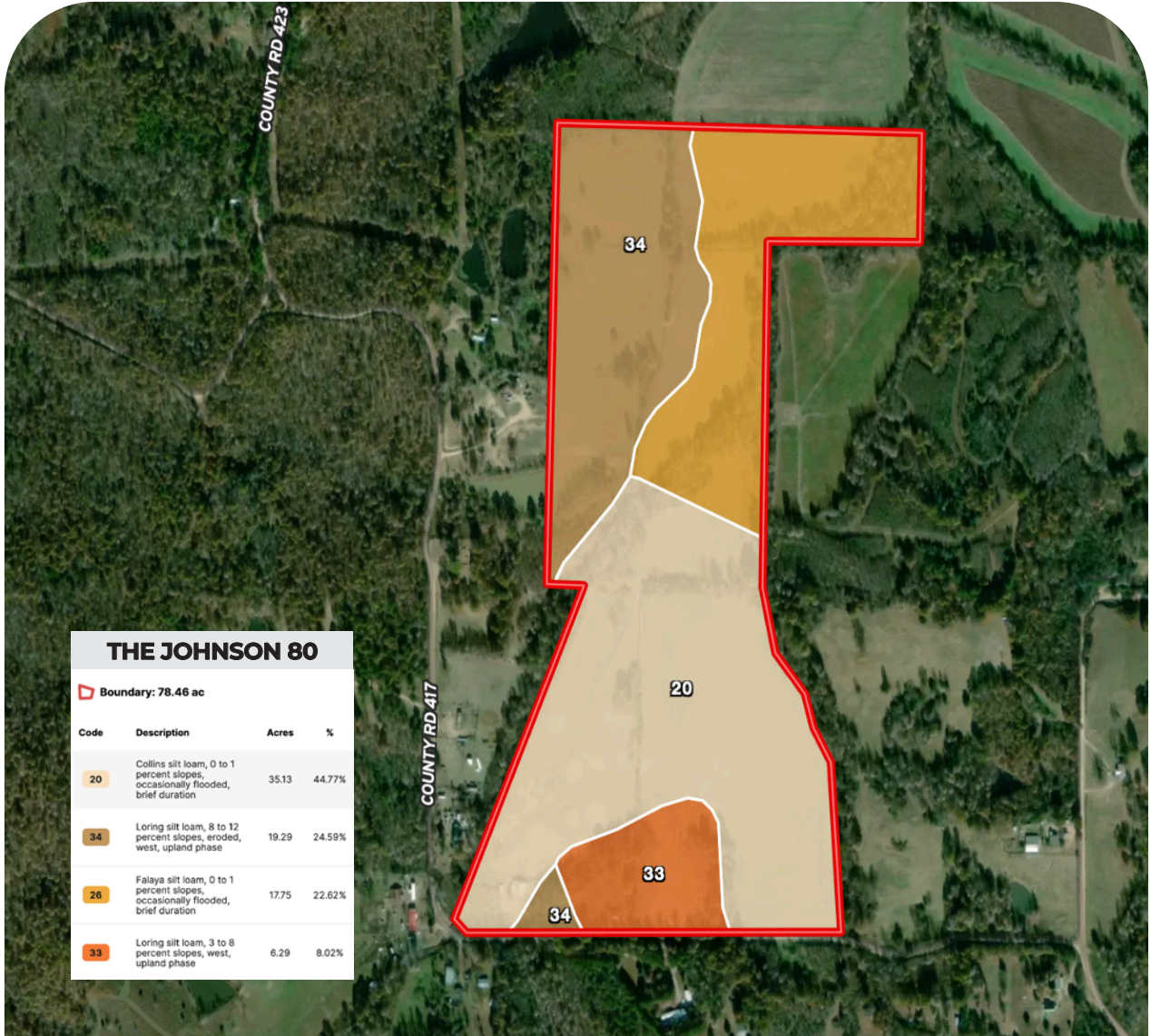
2713 PAULA DRIVE SUITE B | JONESBORO, AR 72404 | TILLERLAND.COM | 870-336-2654

# TILLER LAND

## THE JOHNSON 80

- Clay County, Arkansas -

### SOIL MAP



CONSULTING | REALTY | DEVELOPMENT

# TILLER LAND

# TILLER LAND

## THE JOHNSON 80

- Clay County, Arkansas -

### REGIONAL MAP



CONSULTING | REALTY | DEVELOPMENT

# TILLER LAND



# TILLER LAND

## THE JOHNSON 80

- Clay County, Arkansas -





CONSULTING | REALTY | DEVELOPMENT

# TILLER LAND

- COMPANY -

Thanks for your interest in

## THE JOHNSON 80

For questions or a property tour,  
please contact:

**TANER WOLVERTON**

**LAND AGENT**

870.761.4700 | [TANER@TILLERLAND.COM](mailto:TANER@TILLERLAND.COM)

**KELLY PHIPPS**  
PRINCIPAL BROKER  
870.351.2097  
[KELLY@TILLERLAND.COM](mailto:KELLY@TILLERLAND.COM)

**BRIAN MACK**  
LAND AGENT  
870.919.5945  
[BRIAN@TILLERLAND.COM](mailto:BRIAN@TILLERLAND.COM)

**JACK CHILDERS**  
LAND AGENT  
870.243.1959  
[JACK@TILLERLAND.COM](mailto:JACK@TILLERLAND.COM)

**TANER WOLVERTON**  
LAND AGENT  
870.761.4700  
[TANER@TILLERLAND.COM](mailto:TANER@TILLERLAND.COM)

**TILLER LAND COMPANY**

2713 PAULA DRIVE SUITE B | JONESBORO, AR 72404 | 870-336-2654