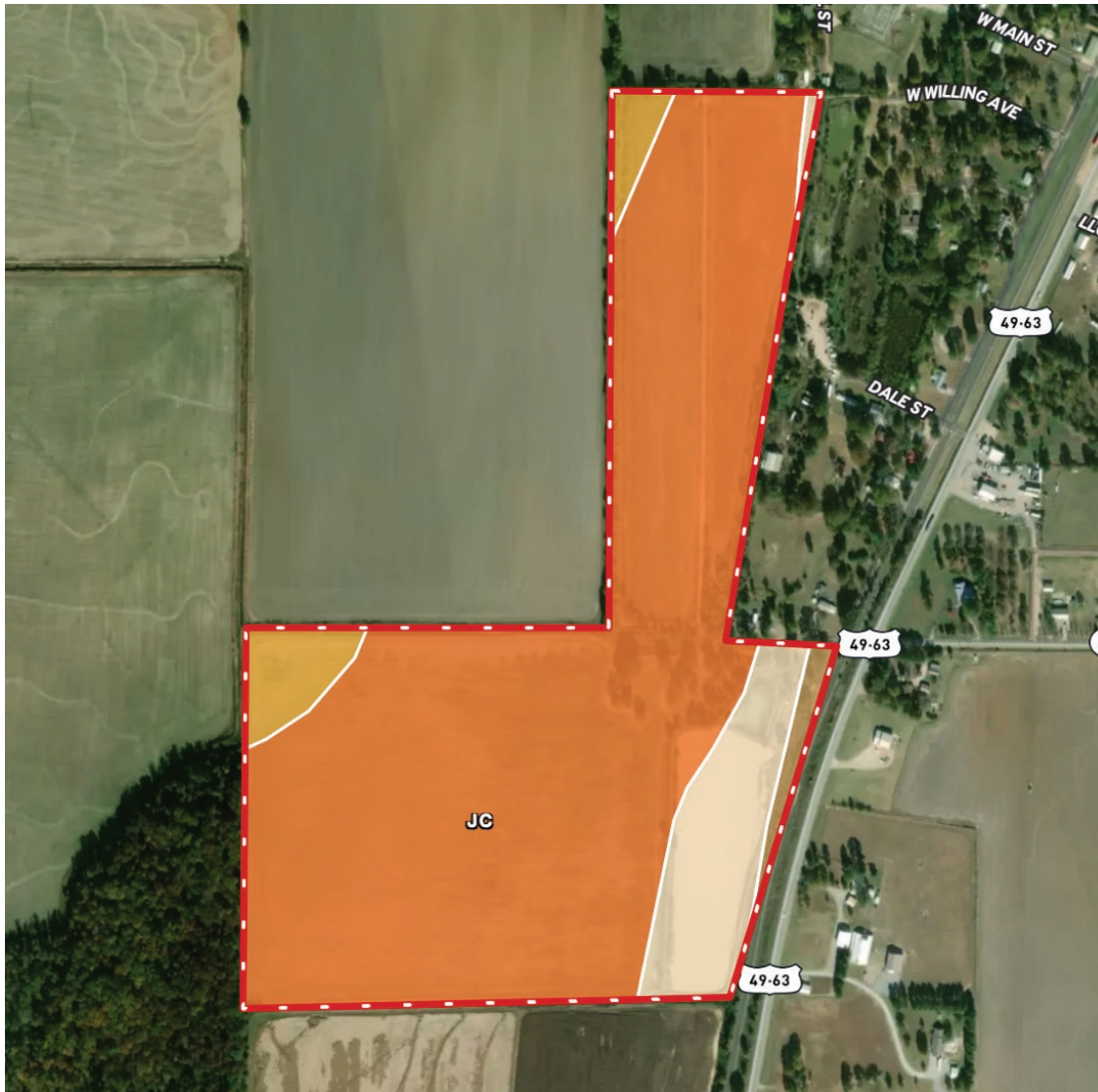


# TILLER LAND

## THE DENNIS FARM

- Poinsett County, Arkansas -

### SOIL MAP



<b>Jc</b> 82.88%	Jackport silty clay, 0 to 1 percent slopes	<b>Tc</b> 4.91%	Tichnor soils, frequently flooded
<b>LgC2</b> 10.57%	Loring silt loam, , 3 to 8 percent slopes	<b>Hm</b> 1.64%	Hillemann silt loam, 0 to 1 percent slopes

CONSULTING | REALTY | DEVELOPMENT

# TILLER LAND

2713 PAULA DRIVE SUITE B | JONESBORO, AR 72404 | TILLERLAND.COM | 870-336-2654