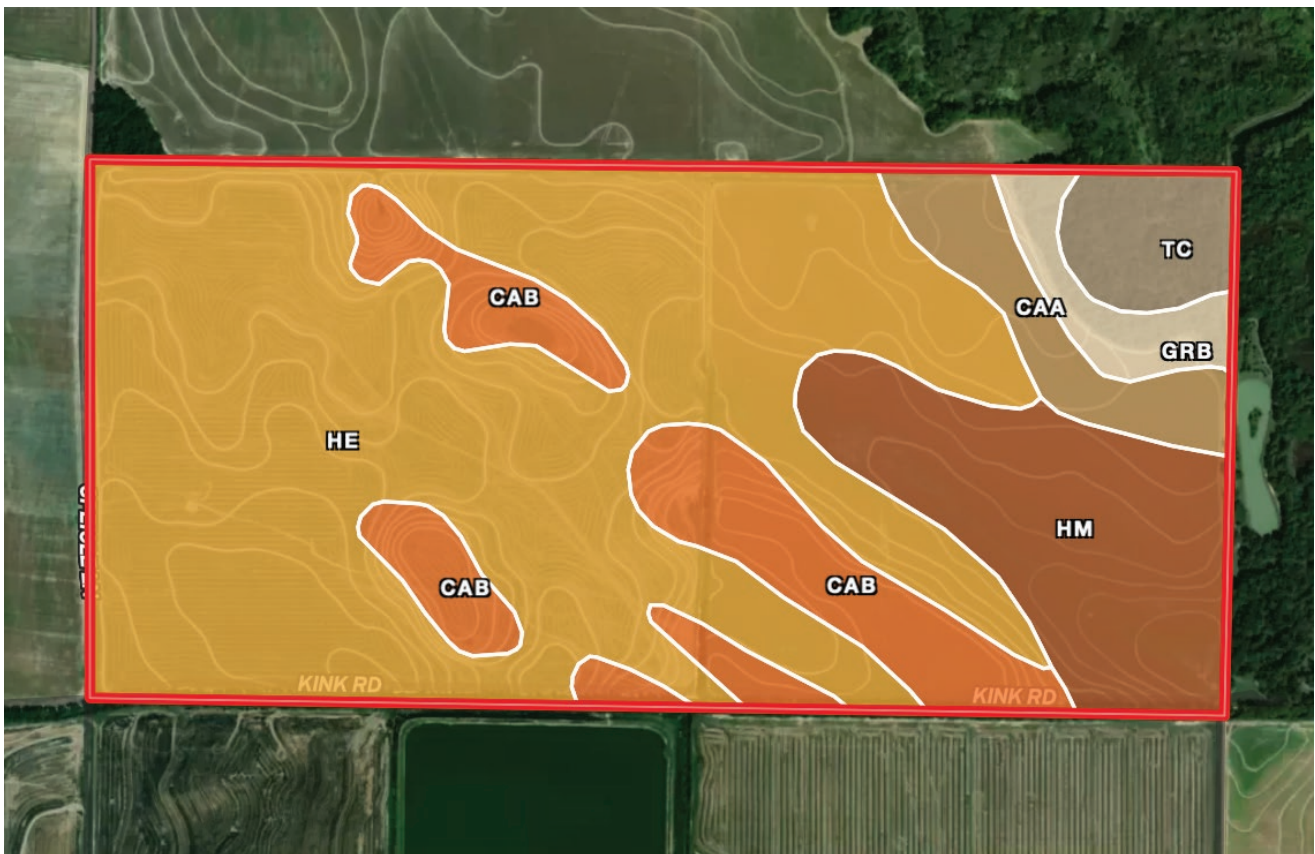


# TILLER LAND

## THE BALL FARM

- Poinsett County, Arkansas -

### SOIL MAP



<b>He</b>	61.49%	Henry silt loam, 0 to 1 percent slopes	<b>CaA</b>	4.68%	Calloway silt loam, 0 to 1 percent slopes
<b>Hm</b>	13.8%	Hillemann silt loam, 0 to 1 percent slopes	<b>Tc</b>	3.61%	Tichnor soils, frequently flooded
<b>CaB</b>	13.52%	Calloway silt loam, 1 to 3 percent slopes	<b>GrB</b>	2.89%	Grenada silt loam, 1 to 3 percent slopes

CONSULTING | REALTY | DEVELOPMENT

## TILLER LAND

2713 PAULA DRIVE SUITE B | JONESBORO, AR 72404 | TILLERLAND.COM | 870-336-2654