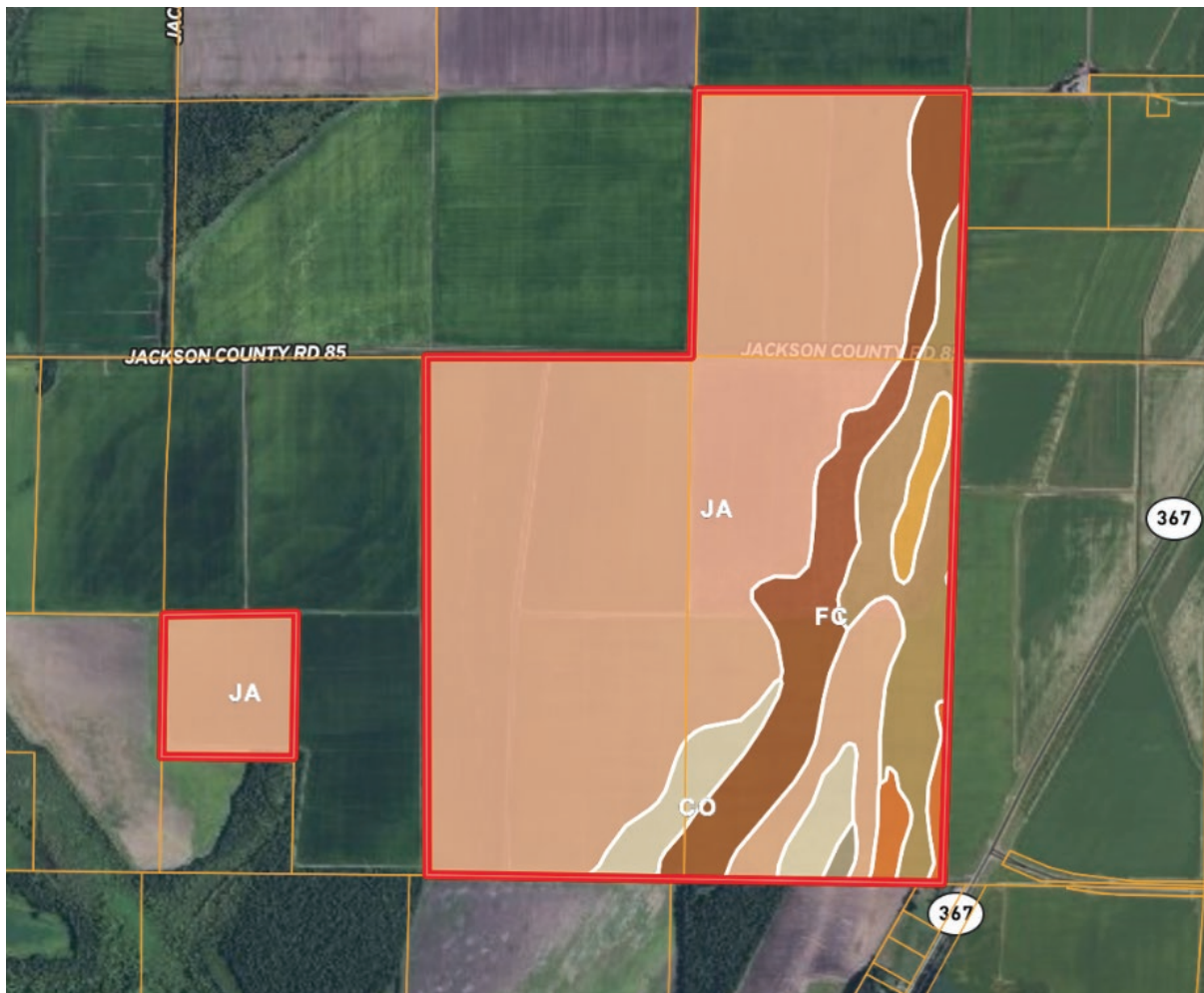




# THE SWIFTON FARM

Jackson County Arkansas

## SOIL MAP



<b>Ja</b> Jackport silty clay loam, 0 to 1 percent slopes (653.2 Acres/73.4%)	<b>BoU</b> Basket fine sandy loam, 0 to 3 percent slopes (12.86 Acres/1.44%)
<b>Fc</b> Foley-Calhoun complex, 0 to 1 percent slopes (94.53 Acres/10.62%)	<b>DvA</b> Dundee silt loam, 0 to 1 percent slopes (10.91 Acres/1.23%)
<b>Af</b> Amagon and Forestdale silt loams (78.63 Acres/10.62%)	<b>Fm</b> Foley-Calhoun-McCrory complex (2.83 Acres/0.32%)
<b>Co</b> Crowley silt loam (37 Acres/4.16%)	