

A row of approximately 15 wooden decoys, likely for waterfowl, are arranged on a wooden rack in front of a building with a thick thatched roof. The decoys are painted to look like ducks, with various patterns of brown, white, and black. The background shows a cloudy sky and some distant structures.

TILLER

CONSULTING | REALTY | DEVELOPMENT

- EST. 2020 -

PRESENTING

THE SWIFTON FARM

JACKSON COUNTY, ARKANSAS

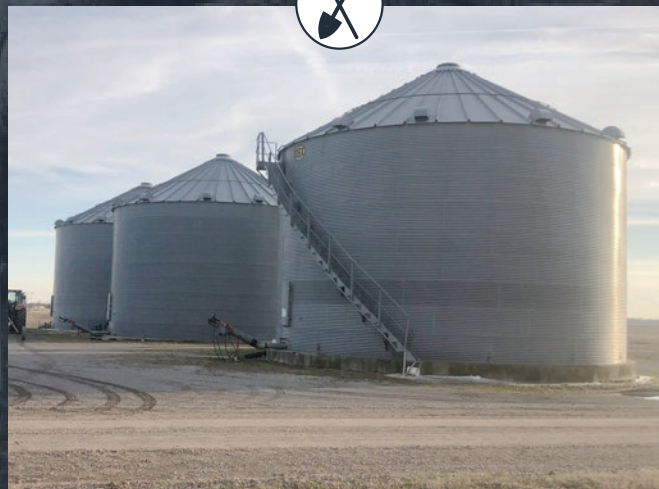
FARMLAND COLLECTION



THE SWIFTON FARM

Jackson County Arkansas

The Swifton Farm is a 887 acre family-owned rice and soybean farm located in Jackson County, Arkansas. The farm is a highly productive, precision leveled rice and soybean farm with great water accessibility. There are nine irrigation wells and a relift, on-site grain storage and also has duck hunting opportunities.



PROPERTY HIGHLIGHTS

- Precision leveled
- Highly productive farm
- Excellent irrigation
- Duck hunting opportunity



THE SWIFTON FARM

Jackson County Arkansas





THE SWIFTON FARM

Jackson County Arkansas

TOTAL BASE ACRES: 731.05

OIL, GAS & MINERAL: All rights owned will transfer

CURRENT RENT: \$210 per acre

REAL ESTATE TAXES: TBD

TOTAL ACREAGE: +/- 887

FARMABLE ACREAGE: +/- 867

COUNTY: Jackson

ASKING PRICE: \$ 6,632,550



THE SWIFTON FARM

Jackson County Arkansas

AERIAL MAP

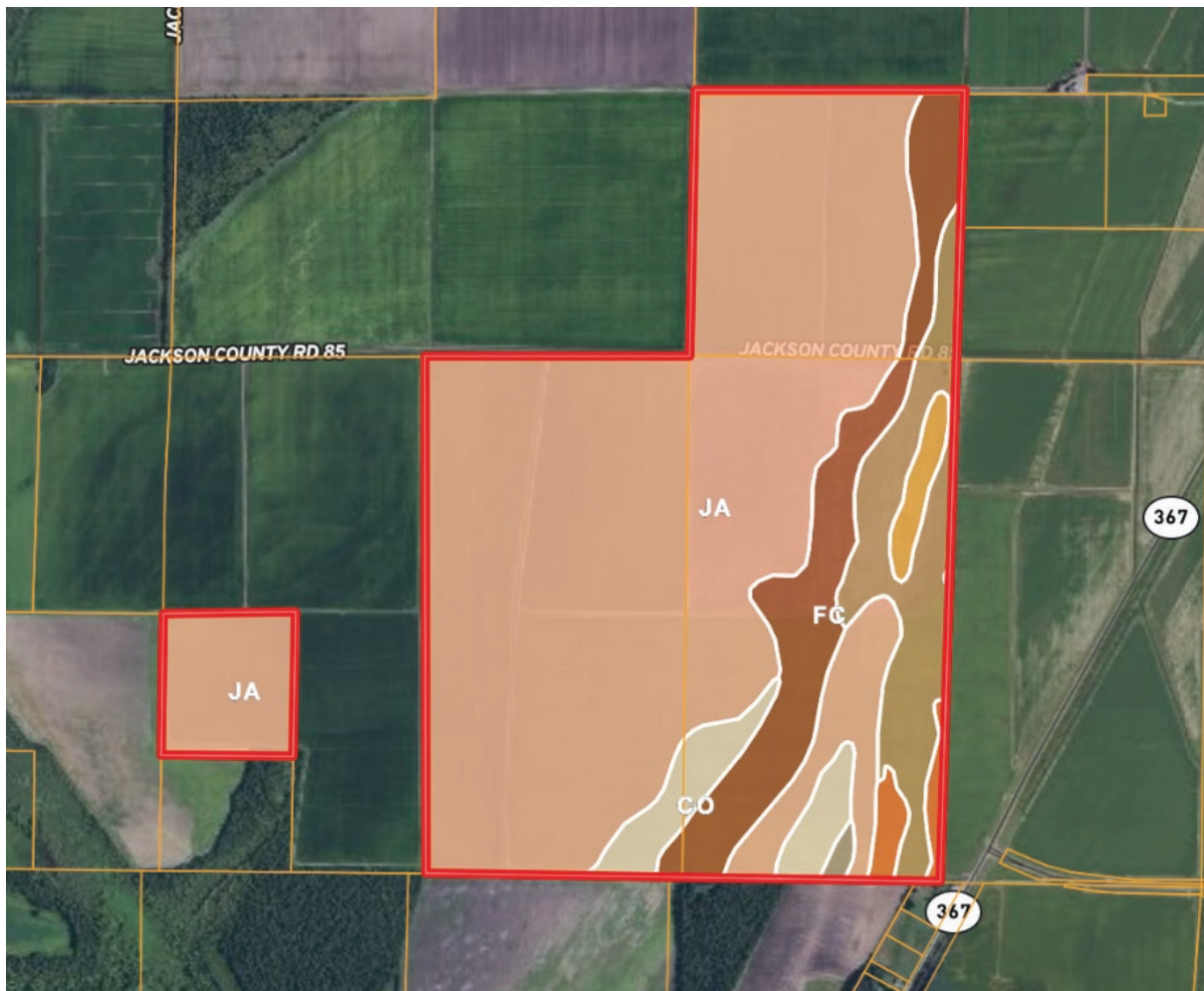




THE SWIFTON FARM

Jackson County Arkansas

SOIL MAP



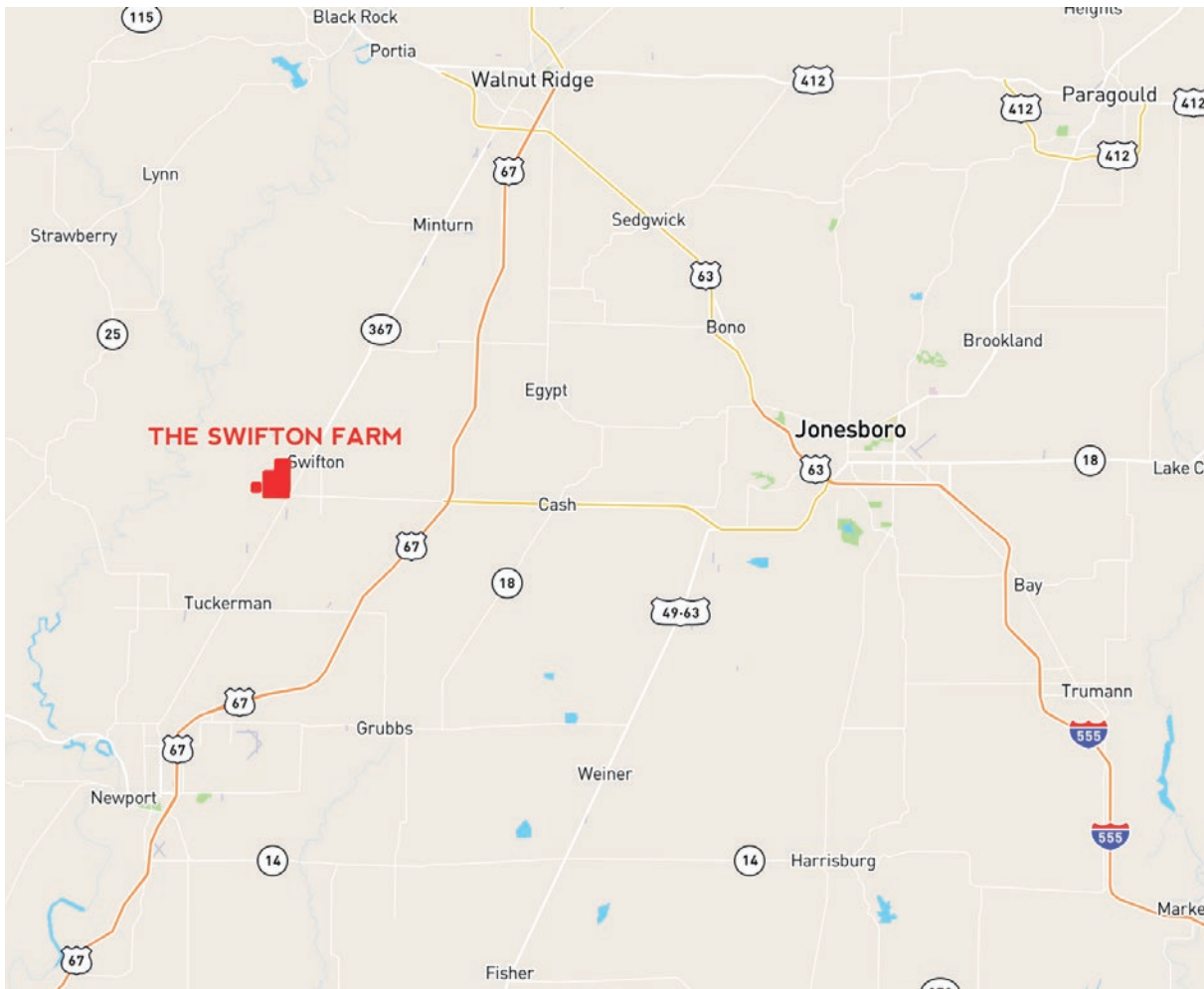
Ja Jackport silty clay loam, 0 to 1 percent slopes (653.2 Acres/73.4%)	BoU Bosket fine sandy loam, 0 to 3 percent slopes (12.86 Acres/1.44%)
Fc Foley-Calhoun complex, 0 to 1 percent slopes (94.53 Acres/10.62%)	DvA Dundee silt loam, 0 to 1 percent slopes (10.91 Acres/1.23%)
Af Amagon and Forestdale silt loams (78.63 Acres/10.62%)	Fm Foley-Calhoun-McCrory complex (2.83 Acres/0.32%)
Co Crowley silt loam (37 Acres/4.16%)	



THE SWIFTON FARM

Jackson County Arkansas

REGIONAL MAP





TILLER

CONSULTING | REALTY | DEVELOPMENT

- EST. 2020 -

Thanks for your interest in
THE SWIFTON FARM

Let us know if we can answer any
questions or if you'd like a property tour.

BRIAN MACK

870.919.5945

BRIAN@TILLERLAND.COM

KELLY PHIPPS

870.351.2097

KELLY@TILLERLAND.COM